

96th Annual

HOARD'S DAIRYMAN

COW JUDGING CONTEST 2026



2026
OFFICIAL
SPONSOR



2025 HOARD'S DAIRYMAN SUPREME CHAMPION

JERSEY — Cowbell Chrome Roxbury-ET EX-95
4-11 305 D 27,626 M 4.1% 1,144 F 3.3% 902 P
Cowbell Acres, Canton, N.Y.



2025 HOARD'S DAIRYMAN RESERVE SUPREME CHAMPION

RED AND WHITE — Kress-Hill Surge-Red-ET EX-91
2-11 305 D 30,063 M 2.9% 871 F 3.0% 903 P
Kress-Hill Dairy, Newton, Wis.



BROWN SWISS — Cher-Mi Rich Tasse EX-90

3-5 365 D 24,554 M 4.0% 982 F 3.3% 815 P
Tudhope Farm, Orwell, Vt.



HOLSTEIN — Siemers Mvin Molly 33580-E EX-92

2-8 364 D 30,210 M 4.0% 1,200 F 3.3% 998 P
B: Siemers Holsteins, Newton, Wis.
O: Forest Ridge Holsteins, Eden, Wis.



AYRSHIRE — Blue-Spruce Vicking Bree-ET EX-92

4-3 369 D 25,088 M 4.2% 1,044 F 3.3% 849 P
Audet's Blue-Spruce Farm, Bridport, Vt.

Winners of the 2025 Hoard's Dairyman Cow Judging Contest

Here are the reasons for last year's contest

BROWN SWISS - CBAD

C places over **B** using dairy-ness, being more angular, sharper down her topline, and more incurving in her thigh. She has a stronger fore udder attachment and tracks straighter on her rear legs. I admit **B** has a wider rear udder.

B places over **A** using her advantage in udder having more height and width, balance and capacity in her rear udder, and a more correct teat shape and placement. **B** has more length to frame and a stronger loin. I grant **A** is more clean cut.

A places over **D** in udder, being fuller at the top of her rear quarters and length to her fore udder. **A** has more style and balance of frame, more depth of rib, and is longer from end to end. She is also more open in her ribs. I admit **D** has less set to her hock, but lacks height and width of rear udder to place higher.

HOLSTEIN - BDAC

B places over **D**, being wider in the chest floor and rump. **B** has more spring of rib and depth of fore and rear rib. She has a higher and wider rear udder and more defined crease.

D uses dairy character to place over **A**, being cleaner boned, flatter and more incurving in her thigh, and harder across her topline. **D** has a higher and wider rear udder attachment. I grant **A** is stronger and wider in her chest floor with more spring of rib.

A places over **C**, being more level on the udder floor. **A** has a deeper, more defined crease and more width of rear udder, width of chest and a more appropriate slope to her rump. **A** also has an advantage in feet and legs with a stronger pastern. I grant **C** is cleaner and flatter in her bone, but lacks quality of udder and feet and legs to place higher.

RED AND WHITE - DABC

D places over **A** in the mammary system, having more quality rear udder, a more defined crease, and more correct rear teat placement. **D** has a longer, smoother fore udder attachment. **D** also shows more depth in the rear flank. I admit

A has a wider, flatter rump.

A uses capacity of rear udder to place over **B**. She also shows more quality in the fore udder. **A** exhibits more body capacity and is broader and wider in the chest floor. I recognize **B**'s femininity of head and neck.

B places over **C** as she is wider in her rump, specifically in the pins. **B** also is deeper and more open in her rib and shows more capacity. I grant **C** shows more symmetry in the rear quarters.

AYRSHIRE - BDAC

B places over **D** in a close placing as she has more dairy strength. She shows more width of chest and openness of fore rib and rear rib. I grant **D** has a higher rear attachment and an udder with more halving in the rear quarters.

Udder carries **D** over **A** with a stronger fore udder, higher, wider rear udder, and teats placed more squarely below each quarter. I recognize **A** is longer in her neck.

A easily places over **C** as she shows more dairyness. She is longer in her neck, cleaner over her hooks and pins, and has a flatter, more incurving thigh. **A** also has a stronger fore udder

and is more nearly level on her udder floor. **A** excels in feet and legs with a cleaner hock and tracks straighter. I admit **C** shows more power, strength, and capacity, but lacks the overall dairyness and quality of udder to place higher.

JERSEY - ADCB

A is a cow that has more frame, capacity, width of chest, and depth of heart. She stands on the most correct set of feet and legs. I grant **D** has more height and width of rear udder.

D places over **C** on udder. She has a higher, wider rear udder and more bloom. She is more level on the udder floor and her teats are centrally placed. I admit **C** is more nearly level from hooks to pins.

C places over **B** having a longer, smoother fore udder attachment and more height and width to her rear udder. She is also stronger and wider, having more width of chest, depth of barrel, and is wider across her hooks, pins, and thurls. I grant **B** tracks straighter on her rear legs. **B** places last as she lacks the width, depth of body, length, and strength of fore udder to merit a higher placing in this class.

2026 Official Sponsor



ENTER ONLINE AT JUDGING.HOARDS.COM OR MAIL THIS OFFICIAL ENTRY BLANK ON OR BEFORE MARCH 23, 2026

DIVISIONS

SENIORS — Anyone 19 years of age or older as of March 23, 2026.

Only one entry per person in the Senior Division.

JUNIORS — Anyone 5 to 18 years of age as of March 23, 2026.

Only one entry per person in the Junior Division.

Five CASH PRIZES in each of the Senior and Junior Divisions:

\$100 \$75 \$60 \$50 \$45

FAMILIES — Must include three or more immediate family members, all 5 years or older, at least one senior division entry, and all entered on one entry blank. Only one entry per family. Four CASH PRIZES — \$100 \$75 \$50 \$25

SPECIAL ENTRY BLANKS* are needed for the following four divisions:

4-H CLUBS, FFA/AG-ED CHAPTERS, COLLEGE, AND AGRIBUSINESS TEAMS

— Four CASH PRIZES in each division — \$100 \$75 \$50 \$25

AG-ED INSTRUCTORS — Four CASH PRIZES — \$100 \$75 \$50 \$25

AGRI-MARKETING INDIVIDUALS — Advertisers & agencies of *Hoard's Dairyman*

*Write to: Contest Dept., Hoard's Dairyman, P.O. Box 801, Ft. Atkinson, WI 53538-0801 or email judging@hoards.com

RULES

1. Only one entry per division (see opposite), but an individual may enter in more than one division. For example, you may enter with your 4-H club, family, and as an individual; but your 4-H club and your family may enter only once.
2. Entries must be postmarked on or before **MARCH 23, 2026**.
3. All individuals entering with a group are automatically entered in the Junior or Senior Division and are eligible to receive cash prizes in those divisions.
4. Contest is open to everyone except Hoard's Dairyman employees and members of their families.
5. Enter online at judging.hoards.com or mail entries to: Contest Dept., Hoard's Dairyman, P.O. Box 801, Fort Atkinson, WI 53538-0801.
6. Keep a copy of your placings — no entries returned.
7. **Indicate your choice for "Supreme Winner" by circling the letter of your overall favorite cow in the contest. (For example, you placed the Brown Swiss class (A)B-C-D and A is your selection for "Supreme Winner.") Please select only one winner.**

PLEASE PRINT YOUR NAME	AGE	BROWN SWISS					HOLSTEIN					GUERNSEY					AYRSHIRE					JERSEY					TOTAL
		indicate places by letters				score	indicate places by letters				score	indicate places by letters				score	indicate places by letters				score						
		1st	2nd	3rd	4th			1st	2nd	3rd		4th		1st	2nd		3rd	4th		1st		2nd	3rd	4th		1st	2nd

NAME _____ EMAIL _____ PHONE _____

ST. _____ CITY _____ STATE _____ ZIP CODE _____

How last year's classes were placed



BROWN SWISS C—First



B—Second



A—Third



D—Fourth



HOLSTEIN B—First



D—Second



A—Third



C—Fourth



RESERVE SUPREME CHAMPION
RED AND WHITE D—First



A—Second



B—Third



C—Fourth



AYRSHIRE B—First



D—Second



A—Third



C—Fourth



SUPREME CHAMPION
JERSEY A—First



D—Second



C—Third



B—Fourth

OFFICIAL SCORING KEY FOR 2025 COW JUDGING CONTEST

BROWN SWISS C B A D

CBAD—100	BCAD—94	ACBD—70	DCBA—52
CBDA—94	BCDA—88	ABCD—64	DBCA—46
CABD—88	BACD—76	ACDB—52	DCAB—40
CDBA—76	BDCA—64	ABDC—40	DBAC—28
CADB—70	BADC—52	ADCB—28	DACB—22
CDAB—64	BDAC—46	ADBC—22	DABC—16

HOLSTEIN B D A C

BDAC—100	DBAC—96	ABDC—80	CBDA—44
BADC—92	DABC—84	ADBC—76	CDBA—40
BDCA—88	DBCA—84	ABCD—60	CBAD—36
BACD—72	DACB—60	ADCB—52	CDAB—28
BCDA—68	DCBA—60	ACBD—36	CABD—24
BCAD—60	DCAB—48	ACDB—32	CADB—20

RED AND WHITE D A B C

DABC—100	ADBC—96	BDAC—84	CDAB—78
DACB—98	ADCB—94	BADC—80	CADB—74
DBAC—94	ABDC—86	BDCA—76	CBDA—72
DCAB—90	ACDB—82	BACD—68	CABD—64
DBCA—86	ABCD—74	BCDA—64	CBDA—62
DCBA—84	ACBD—72	BCAD—60	CBAD—58

AYRSHIRE B D A C

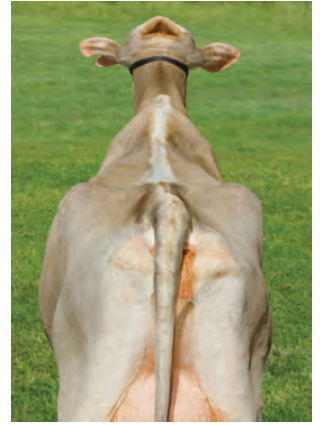
BDAC—100	DBAC—96	ABDC—84	CBDA—48
BADC—94	DABC—86	ADBC—80	CDBA—44
BDCA—88	DBCA—84	ABCD—66	CBAD—42
BACD—76	DACB—64	ADCB—58	CDAB—34
BCDA—70	DCBA—62	ACBD—44	CABD—32
BCAD—64	DCAB—52	ACDB—40	CADB—28

JERSEY A D C B

ADCB—100	DACB—92	CADB—80	BADC—50
ACDB—94	DABC—82	CDAB—72	BACD—44
ADBC—90	DCAB—78	CBDA—64	BDAC—42
ACBD—78	DBAC—58	CDBA—48	BCAD—30
ABDC—74	DCBA—54	CBAD—40	BDCA—28
ABCD—68	DBCA—44	CBDA—32	BCDA—22

BROWN SWISS

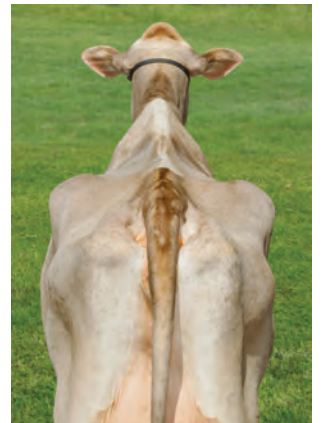
A



B



C



D

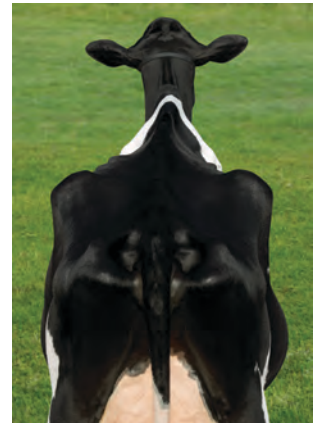


HOLSTEIN

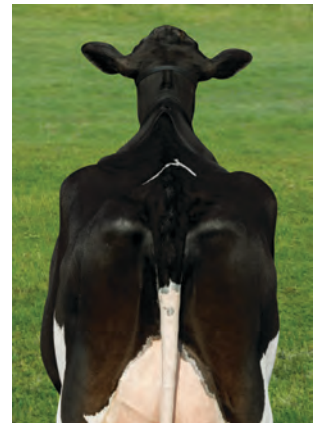
A



B



C

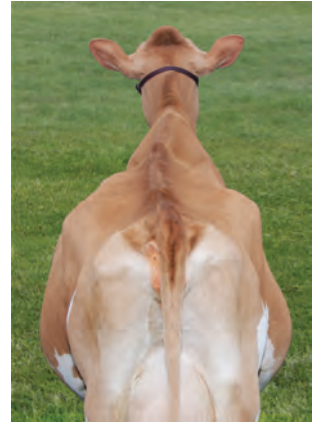


D

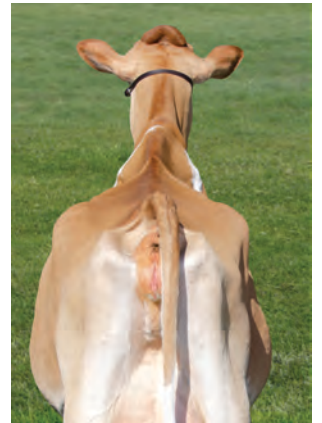


GUERNSEY

A



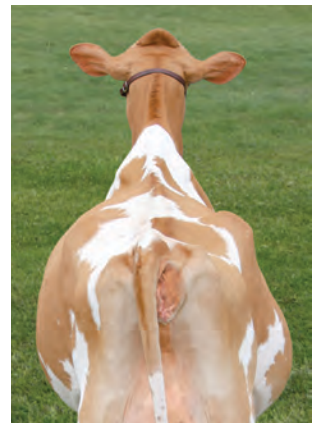
B



C



D

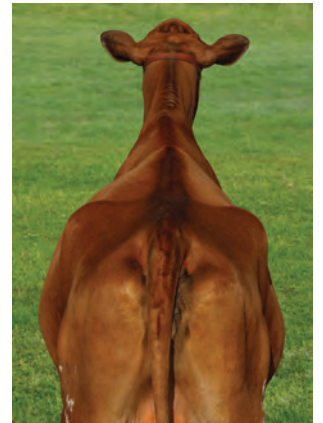


AYRSHIRE

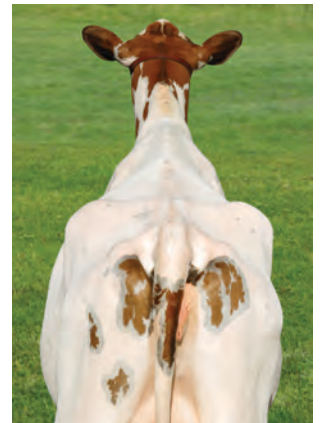
A



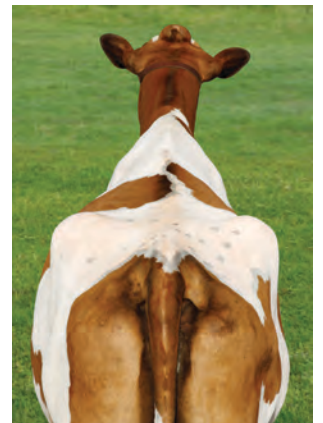
B



C



D



JERSEY

A



B



C



D

