

**95th Annual**

**HOARD'S DAIRYMAN**

# COW JUDGING CONTEST 2025



**2024 Hoard's Dairyman Supreme Champion  
GUERNSEY — Springhill Mentor Joyce EX-95**  
5-9 305 D 35,400 M 3.6% 1,281 F 3.2% 1,136 P  
Springhill, Big Prairie, Ohio



**2024 Hoard's Dairyman Reserve Supreme Champion  
AYRSHIRE — Palmyra Predator B Ruthless-ET EX-94**  
4-2 305 D 32,020 M 4.7% 1,509 F 3.1% 1,008 P  
Old-Bankston Ayrshires, Epworth, Iowa



**BROWN SWISS — Empire DK Dena EX-92 2E**  
4-2 365 D 31,310 M 4.1% 1,290 F 3.6% 1,125 P  
Empire Brown Swiss, Palmyra, N.Y.



**HOLSTEIN — Our-Favorite Unleashed-ET EX-94 2E**  
6-3 305 D 32,460 M 3.9% 1,258 F 3.2% 1,037 P  
B: Our-Favorite Holsteins, Fall Creek, Wis.  
O: Derek, Landon, and Lane Van Dyk, New Richmond, Wis.



**JERSEY — Four-Hills Lola Guns N Roses EX-94**  
4-3 262 D 19,610 M 6.0% 1,184 F 3.5% 693 P  
Four Hills Farm, Bristol, Vt.

**Winners of the 2024 Hoard's Dairyman Cow Judging Contest**

# Here are the reasons for last year's contest

## BROWN SWISS — B D C A

**B** places over **D** because she is longer-bodied and harder down her topline. **B** has a stronger fore udder attachment and a deeper crease. In addition, I prefer **B**'s dairyness through her head and neck. I admit **D** has a higher, wider rear udder attachment.

**D** goes over **C** because she is higher and wider in the rear udder attachment and shows more crease. **D** is also more angular, especially over the hooks, pins, and thigh. **C** has a snugger fore udder attachment.

**C** places over **A** with her strength and udder quality. **C** is wider in the front end and has a more quality udder, being snugger in the fore udder attachment and carrying her udder higher above her hocks. I admit **A** is longer in her head and neck, but she lacks the quality of udder and strength to place higher.

## HOLSTEIN — B C A D

**B** places over **C** because she has more capacity and bloom to her udder and a longer fore udder. **B** is also wider in the chest floor and more open in her

rib. **B** is stronger in her loin and leveler from hips to pins. I admit **C** is leveler on her udder floor.

In a close middle, **C** places over **A** because she has more symmetry to her udder. She is leveler on her udder floor and in her rear quarters. **C** is also longer and standing on stronger pasterns. I admit **A** is a more angular cow.

**A** uses her dairyness to place over **D**. She is longer in the head and neck, more open in her rib, and cleaner over her rump. **A** is wider at the top of the rear udder and tracks straighter. While **D** has a tighter fore udder attachment, she lacks the depth of rib and balance to place higher.

## GUERNSEY — C D A B

**C** wins easily, overpowering **D** with her capacity. She is longer, deeper, and wider than **D**. **C** is also higher and wider in her rear udder attachment. I grant **D** is leveler on the udder floor.

**D** places over **A** because she is longer in her neck, deeper in her rear rib, and cleaner through the hock. **D** is also leveler on the udder floor and longer and smoother in her fore udder

attachment. **A** keeps this a close pair because she has more length of frame and width of chest.

**A** places over **B** because she stands on a straighter set of rear legs as viewed from the side. **A** is also much cleaner through the front end, longer in the neck, and freer of excess flesh through her rump. I grant that **B** has an edge in depth and openness of rib, but she doesn't show the same sharpness as the other cows.

## AYRSHIRE — C A B D

**C** narrowly places over **A** with the edge in body capacity, having more depth to the rib. **C** is also longer in her neck and more open in the rib. I recognize **A** is higher in the rear udder attachment and smoother in the fore udder.

**A** places over **B** with her sheer advantage in strength. **A** is wider in the front end and rump. She is also deeper in the rib. Finally, **A** has an advantage in rear teat placement. I admit **B** has less set and is flatter in the hock.

Finally, **B** handily places over **D** with her clear-cut advantage in the udder. **B** has higher rear udder attachment, a longer fore

udder attachment, and is more level on the udder floor. In addition, **B** has a shorter, stronger set of pasterns. I grant **D** is deeper in the rear rib. However, **D** lacks the correctness of udder attachments, strength of pasterns, and refinement to place any higher.

## JERSEY — C B D A

**C** wins handily with her udder and dairy strength. She places over **B** for being longer through her head and neck and cleaner over her withers and rump. **C** is also wider through her rump. I admit **B** is deeper in her rib.

**B** has a longer, smoother blending fore udder than **D**, a higher rear udder attachment, and carries her udder higher above the hock. She also stands more comfortably on her rear legs. I grant **D** is more angular.

**D** places over **A** with her frame. **D** is wider in the chest and rump, deeper in her flank, has more spring of rib, and fuller in the crops. **D** also has a more desirable front teat placement. While I admire the cleanliness of **A**, she lacks the strength, length of frame, and quality of udder.

ENTER ONLINE AT [JUDGING.HOARDS.COM](http://JUDGING.HOARDS.COM) OR MAIL THIS OFFICIAL ENTRY BLANK ON OR BEFORE MARCH 24, 2025

### DIVISIONS

**SENIORS** — Anyone 19 years of age or older as of March 24, 2025.

Only one entry per person in the Senior Division.

**JUNIORS** — Anyone 5 to 18 years of age as of March 24, 2025.

Only one entry per person in the Junior Division.

Five CASH PRIZES in each of the Senior and Junior Divisions:

\$100 \$75 \$60 \$50 \$45

**FAMILIES** — Must include three or more immediate family members, all 5 years or older, at least one senior division entry, and all entered on one entry blank. Only one entry per family. Four CASH PRIZES — \$100 \$75 \$50 \$25

**SPECIAL ENTRY BLANKS\*** are needed for the following four divisions:

**4-H CLUBS, FFA/AG-ED CHAPTERS, COLLEGE, AND AGRIBUSINESS TEAMS**

— Four CASH PRIZES in each division — \$100 \$75 \$50 \$25

**AG-ED INSTRUCTORS** — Four CASH PRIZES — \$100 \$75 \$50 \$25

**AGRI-MARKETING INDIVIDUALS** — Advertisers & agencies of *Hoard's Dairyman*

\*Write to: Contest Dept., Hoard's Dairyman, P.O. Box 801, Ft. Atkinson, WI

53538-0801 or email [judging@hoards.com](mailto:judging@hoards.com)

### RULES

- Only one entry per division (see opposite), but an individual may enter in more than one division. For example, you may enter with your 4-H club, family, and as an individual; but your 4-H club and your family may enter only once.
- Entries must be postmarked on or before **MARCH 24, 2025**.
- All individuals entering with a group are automatically entered in the Junior or Senior Division and are eligible to receive cash prizes in those divisions.
- Contest is open to everyone except Hoard's Dairyman employees and members of their families.
- Enter online at [judging.hoards.com](http://judging.hoards.com) or mail entries to: Contest Dept., Hoard's Dairyman, P.O. Box 801, Fort Atkinson, WI 53538-0801.
- Keep a copy of your placings — no entries returned.
- Indicate your choice for "Supreme Winner" by circling the letter of your overall favorite cow in the contest. (For example, you placed the Brown Swiss class (A)B-C-D and A is your selection for "Supreme Winner.") Please select only one winner.

PLEASE PRINT YOUR NAME	AGE	BROWN SWISS				HOLSTEIN				RED & WHITE				AYRSHIRE				JERSEY				TOTAL
		indicate places by letters				indicate places by letters				indicate places by letters				indicate places by letters				indicate places by letters				
		1st	2nd	3rd	4th	1st	2nd	3rd	4th	1st	2nd	3rd	4th	1st	2nd	3rd	4th	1st	2nd	3rd	4th	score

NAME \_\_\_\_\_ EMAIL \_\_\_\_\_ PHONE \_\_\_\_\_

ST. \_\_\_\_\_ CITY \_\_\_\_\_ STATE \_\_\_\_\_ ZIP CODE \_\_\_\_\_



# How last year's classes were placed



**BROWN SWISS** B—First



D—Second



C—Third



A—Fourth



**HOLSTEIN** B—First



C—Second



A—Third



D—Fourth



**GUERNSEY** C—First



D—Second



A—Third



B—Fourth



**AYRSHIRE** C—First



A—Second



B—Third



D—Fourth



**JERSEY** C—First



B—Second



D—Third



A—Fourth

## OFFICIAL SCORING KEY FOR 2024 COW JUDGING CONTEST

### BROWN SWISS B D C A

BDCA—100	DBCA—94	CBDA—78	ABDC—66
BDAC—96	DBAC—90	CDBA—72	ABDC—60
BCDA—92	DCBA—80	CBAD—66	ABCD—58
BADC—84	DABC—72	CDAB—54	ADCB—46
BCAD—80	DCAB—62	CABD—48	ACBD—44
BACD—76	DACB—58	CADB—42	ACDB—38

### HOLSTEIN B C A D

BCAD—100	CBAD—92	ABCD—84	DBCA—60
BACD—96	CBDA—84	ACBD—76	DBAC—56
BCDA—92	CABD—80	ABDC—72	DCBA—52
BADC—84	CBDA—64	ACDB—56	DABC—44
BDCA—80	CADB—60	ADBC—52	DCAB—40
BDAC—76	CDAB—52	ADCB—44	DACB—36

### GUERNSEY C D A B

CDAB—100	DCAB—88	ACDB—80	BCDA—56
CADB—96	DCBA—80	ACBD—68	BCAD—52
CDBA—92	DACB—72	ADCB—68	BDCA—44
CABD—84	DBCA—56	ABCD—44	BACD—36
CBDA—80	DABC—48	ADBC—44	BDAC—28
CBAD—76	DBAC—40	ABDC—32	BADC—24

### AYRSHIRE C A B D

CABD—100	ACBD—98	BCAD—90	DCAB—60
CBAD—96	ABCD—92	BACD—88	DACB—58
CADB—90	ACDB—88	BCDA—76	DCBA—56
CBDA—82	ABDC—76	BADC—72	DABC—52
CDAB—76	ADCB—72	BDCA—60	DBCA—50
CDBA—72	ADBC—66	BDAC—58	DBAC—48

### JERSEY C B D A

CBDA—100	BCDA—88	DCBA—80	ACBD—68
CDBA—96	BCAD—84	DCAB—72	ACDB—64
CBAD—96	BDCA—72	DBCA—68	ABCD—56
CDAB—88	BACD—64	DACB—52	ADCB—48
CABD—88	BDCA—52	DBAC—48	ADBC—40
CADB—84	BADC—48	DABC—40	ADBC—36



# BROWN SWISS CLASS

**A**



**B**



**C**



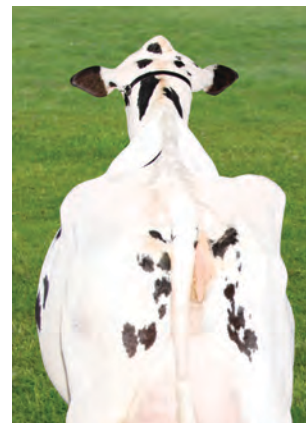
**D**



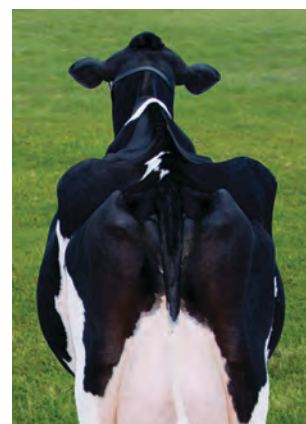


# HOLSTEIN CLASS

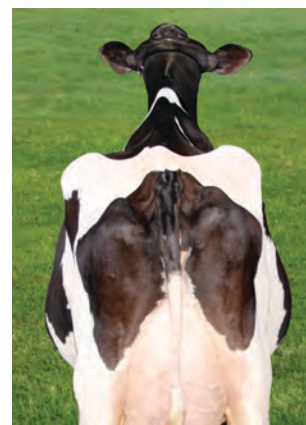
**A**



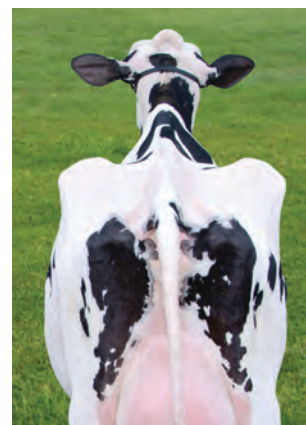
**B**



**C**



**D**





# RED AND WHITE CLASS

**A**



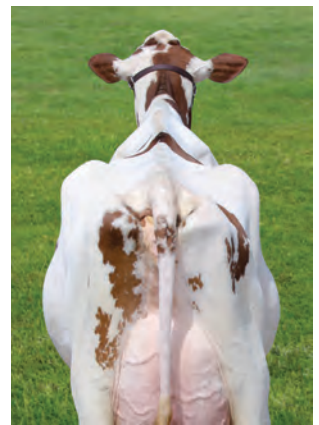
**B**



**C**



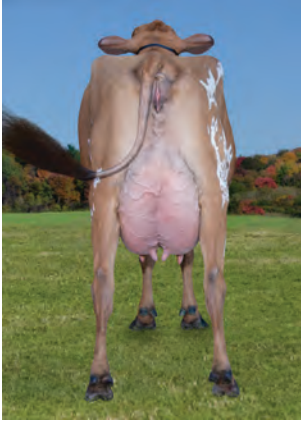
**D**



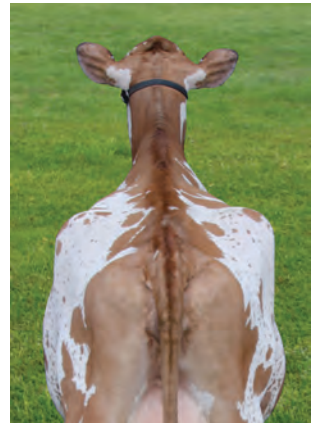


# AYRSHIRE CLASS

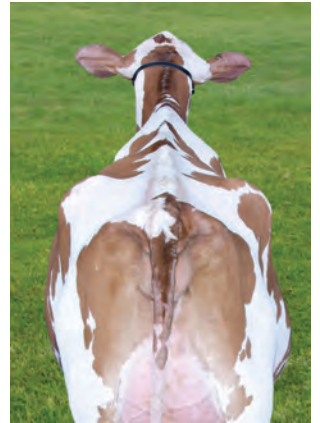
**A**



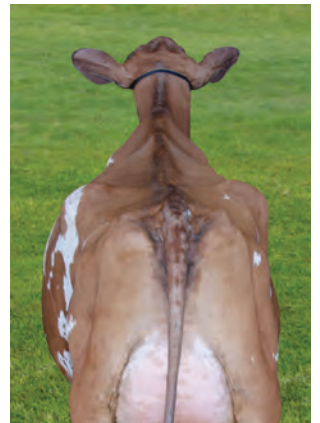
**B**



**C**



**D**





# JERSEY CLASS

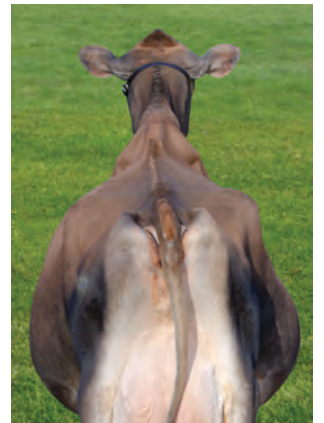
**A**



**B**



**C**



**D**

