

94th Annual

HOARD'S DAIRYMAN

COW JUDGING CONTEST 2024



2023 Hoard's Dairyman Supreme Champion
BROWN SWISS — Pit-Crew WF Twilite-ET EX-93 2E
5-4 305 D 27,490 M 4.1% 1,123 F 3.3% 918 P
Pit-Crew Genetics, Cambridge, Minn.



HOLSTEIN — Peachey Control Texas EX-93
4-0 305 D 36,630 M 3.6% 1,323 F 3.0% 1,103 P
Heart & Soul Holsteins, Millmont, Pa.



GUERNESEY — Valley Gem Hit It Devora EX-92
3-2 305 D 21,220 M 5.1% 1,092 F 3.8% 805 P
Valley Gem Farms, Cumberland, Wis.



MILKING SHORTHORN — Pine-Valley Justice Carlin EXP
EX-91 2E
3-8 281 D 17,310 M 4.3% 744 F 3.4% 596 P
Pine Valley Farm, Mineral Point, Wis.



2023 Hoard's Dairyman Reserve Supreme Champion
JERSEY — Discoverys Tequila Puma-ET EX-94
6-2 305 D 15,030 M 6.0% 896 F 4.4% 655 P
Discovery Genetics, Ellsworth, Wis.

Winners of the 2023 Hoard's Dairyman Judging Contest Classes

Here are the reasons for last year's contest

BROWN SWISS — D C B A

Michael Heath

D places over **C** with more strength. Furthermore, **D** has more spring and pop to her rib. I also prefer her width through the midsection of the rear udder, levelness of the udder floor, and veination in her rear udder. I grant **C** is cleaner in the hock and wider in her pins.

C easily goes over **B** as she has more dairy quality and cleanliness. I also prefer her height and width at the top of the rear udder and the smoothness of her fore udder attachment. **C** also exhibits a deeper, more angular rib structure. I grant **B** has more strength.

B goes over **A** as she has more dairy strength. I also prefer the height and width at the top of her rear udder. In addition, **B** is wider through the rump. Although a silky hidéd, stylish cow, **A** finds herself in fourth as she lacks height and width at the top of her rear udder.

HOLSTEIN — D B C A

Joel Phoenix

D's quality udder sorts her to the top of the class. **D** has a smoother blending fore udder attachment, more height to the rear udder, and a more desir-

able teat placement. In addition, **D** exhibits more capacity and a cleaner bone. I admit **B** is wider in the rear udder.

In the close middle pair, **B** goes over **C** for her advantage in the udder. **B** is higher and wider in the rear udder attachment and more balanced in her rear quarters. Furthermore, **B** has more width, especially in her rump. I grant **C** tracks a bit straighter on her legs.

C handily places over **A** for her advantage in depth and strength of the median suspensory ligament. In addition, **C** has more dairy quality, spring to her rib, and length from end to end than **A**. Though I admire the dairy strength found in **A**, she lacks the quality in her udder to merit a higher placing.

GUERNSEY — B A D C

Phillip Topp

B is a handy winner as she has the best udder with the highest and widest rear udder. She uses that advantage to place over **A**. Also, **B** blends a little nicer in her fore udder. I do admit **A** has a bit more spring to her rib.

A goes over **D** in a close placing. I give the nod to **A** on spring of rib and a little more dairyness. **A** also has a more

defined crease. I do grant **D** has more depth of heart.

D places over **C** with a more desirable teat placement and size. **D** is also a bit higher and wider at the top of her rear udder and has more balance to her rear quarters. **D** has more depth of rib and tracks more desirably on her rear feet and legs. While **C** is wider in the rump, she lacks udder quality.

M. SHORTHORN — A D B C

Katie Stevens

A easily wins with her advantage in udder. **A** is higher and wider at the top of the rear udder, with more quality and veination. Also, she is more feminine about the head. **A** excels in her frame, being taller and longer. I grant **D** has more depth to the rear rib.

D places over **B** with a more ideal set to the hock. **D** has a longer, smoother blending fore udder, and her teats are more squarely beneath her front quarters. She is wider in the chest and rump. However, **B** is more refined.

B places over **C** as she stands more squarely on her hind legs when viewed from the rear and on stronger pasterns. **B** is sharper over the withers and topline. **C** keeps this the clos-

est placing as she is longer and shapelier in her fore udder. However, **C** lacks the correctness in feet and legs to place any higher.

JERSEY — A B D C

Mandy Schmidt

A uses her advantage in dairyness and bloom to place over **B**. **A** is sharper over her withers and topline, cleaner through the rump, and more incurving in her thighs. **A** has a more desirable udder quality, a more defined seam, and more width at the top of her rear udder. However, **B** is more nearly level on her udder floor and longer.

B's frame places her over **D**. She is longer with more power and strength from her chest through her rump. **B** has more capacity to her rear udder with a more desirable teat size and shape. I grant **D** is sharper.

D places over **C** with a more desirable set of feet and legs. She's stronger in her pastern and has a more correct set to her legs. I also give **D** the advantage in mammary system with more balanced rear quarters. Finally, **D** has more style through her front end. Although **C** is a longer cow, she lacks functionality to her feet and legs to place higher.

ENTER ONLINE AT JUDGING.HOARDS.COM OR MAIL THIS OFFICIAL ENTRY BLANK ON OR BEFORE MARCH 25, 2024

DIVISIONS

SENIORS — Anyone 19 years of age or older as of March 25, 2024.

Only one entry per person in the Senior Division.

JUNIORS — Anyone 5 to 18 years of age as of March 25, 2024.

Only one entry per person in the Junior Division.

Five CASH PRIZES in each of the Senior and Junior Divisions:

\$100 \$75 \$60 \$50 \$45

FAMILIES — Must include three or more immediate family members, all 5 years or older, at least one senior division entry, and all entered on one entry blank.

Only one entry per family. Four CASH PRIZES — \$100 \$75 \$50 \$25

SPECIAL ENTRY BLANKS* are needed for the following four divisions:

4-H CLUBS, FFA/AG-ED CHAPTERS, COLLEGE, AND AGRIBUSINESS TEAMS —

Four CASH PRIZES in each division — \$100 \$75 \$50 \$25

AG-ED INSTRUCTORS — Four CASH PRIZES — \$100 \$75 \$50 \$25

*Write to: Contest Dept., Hoard's Dairyman, P.O. Box 801, Ft. Atkinson, WI

53538-0801 or email judging@hoards.com

RULES

1. Only one entry per division (see opposite), but an individual may enter in more than one division. For example, you may enter with your 4-H club, family, and as an individual; but your 4-H club and your family may enter only once.
2. Entries must be postmarked on or before **MARCH 25, 2024**.
3. All individuals entering with a group are automatically entered in the Junior or Senior Division and are eligible to receive cash prizes in those divisions.
4. Contest is open to everyone except Hoard's Dairyman employees and members of their families.
5. Enter online at judging.hoards.com or mail entries to: Contest Dept., Hoard's Dairyman, P.O. Box 801, Fort Atkinson, WI 53538-0801.
6. Keep a copy of your placings — no entries returned.
7. **Indicate your choice for "Supreme Winner" by circling the letter of your overall favorite cow in the contest. (For example, you placed the Brown Swiss class **A**-B-C-D and **A** is your selection for "Supreme Winner.") Please select only one winner.**

PLEASE PRINT YOUR NAME	AGE	BROWN SWISS				HOLSTEIN				GUERNSEY				AYRSHIRE				JERSEY				TOTAL
		indicate places by letters				indicate places by letters				indicate places by letters				indicate places by letters				indicate places by letters				
		1st	2nd	3rd	4th	score	1st	2nd	3rd	4th	score	1st	2nd	3rd	4th	score	1st	2nd	3rd	4th	score	

NAME _____ EMAIL _____ PHONE _____

ST. _____ CITY _____ STATE _____ ZIP CODE _____

How last year's classes were placed



BROWN SWISS D—First



C—Second



B—Third



A—Fourth



HOLSTEIN D—First



B—Second



C—Third



A—Fourth



GUERNSEY B—First



A—Second



D—Third



C—Fourth



MILKING SHORTHORN A—First



D—Second



B—Third



C—Fourth



JERSEY A—First



B—Second



D—Third



C—Fourth

OFFICIAL SCORING KEY FOR 2023 COW JUDGING CONTEST

BROWN SWISS D C B A

DCBA—100 CDBA—96 BDCA—76 ADCB—64
 DCAB—96 CDAB—92 BDAC—62 ADCB—54
 DBCA—90 CBDA—82 BCDA—72 ACDB—60
 DBAC—76 CBAD—64 BCAD—54 ACBD—46
 DACB—82 CADB—74 BADC—44 ABCD—40
 DABC—72 CABD—60 BACD—40 ABCD—36

HOLSTEIN D B C A

DBCA—100 BDCA—94 CDBA—86 ABDC—56
 DBAC—90 BDAC—84 CDAB—72 ADCB—52
 DCBA—96 BCDA—84 CBDA—80 ABDC—50
 DCAB—82 BCAD—64 CBAD—60 ABCD—40
 DABC—76 BADC—64 CABD—52 ACDB—42
 DACB—72 BACD—54 CABD—46 ACBD—36

GUERNSEY B A D C

BADC—100 ABDC—94 DBAC—90 CBAD—66
 BACD—92 ABCD—86 DBCA—80 CBDA—64
 BDAC—98 ABDC—86 DABC—84 CABD—60
 BDCA—88 ADCB—70 DACB—68 CABD—52
 BCAD—82 ACBD—70 DCBA—64 CDAB—56
 BCDA—80 ACDB—62 DCAB—58 CDAB—50

MILKING SHORTHORN A D B C

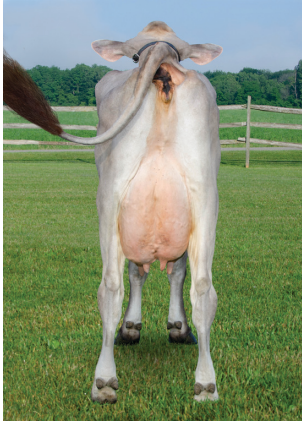
ADBC—100 DABC—90 BADC—78 CABD—66
 ADCB—96 DACB—86 BACD—68 CABD—60
 ABDC—94 DBAC—74 BDAC—68 CDAB—56
 ABCD—84 DBCA—54 BDCA—48 CDAB—40
 ACDB—86 DCAB—66 BCAD—48 CBAD—44
 ACBD—80 DCBA—50 BCDA—38 CBDA—34

JERSEY A B D C

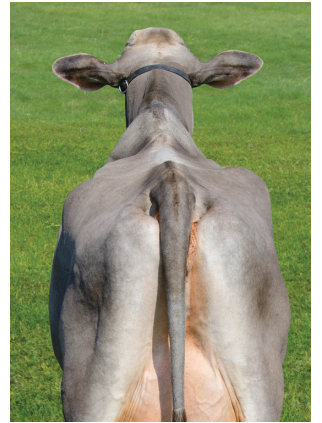
ABDC—100 BADC—96 DABC—84 CABD—72
 ABCD—96 BACD—92 DACB—74 CABD—66
 ABDC—94 BDAC—86 DBAC—80 CBAD—68
 ADCB—84 BDCA—72 DBCA—66 CBDA—58
 ACBD—86 BCAD—78 DCAB—60 CDAB—56
 ACDB—80 BCDA—68 DCBA—56 CDAB—52

BROWN SWISS CLASS

A



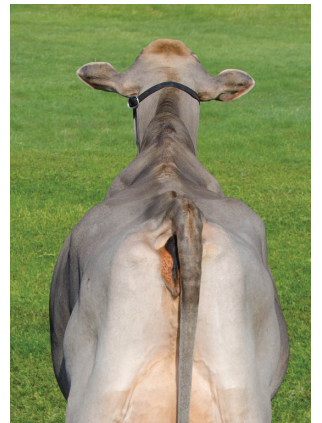
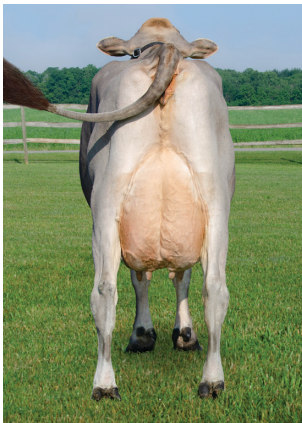
B



C



D

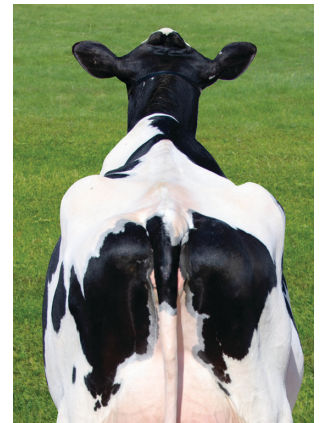


HOLSTEIN CLASS

A



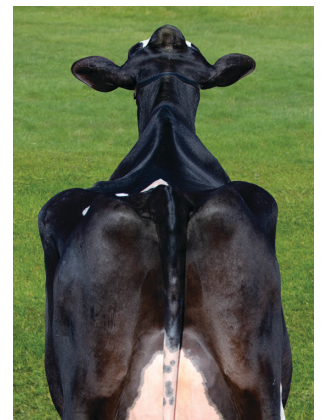
B



C



D



GUERNSEY CLASS

A



B



C



D



AYRSHIRE CLASS

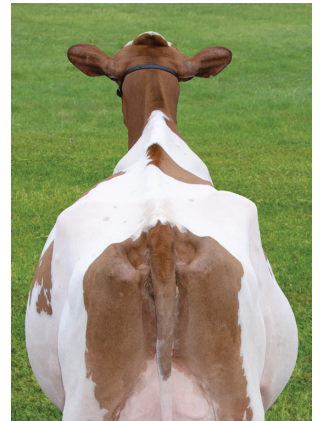
A



B



C

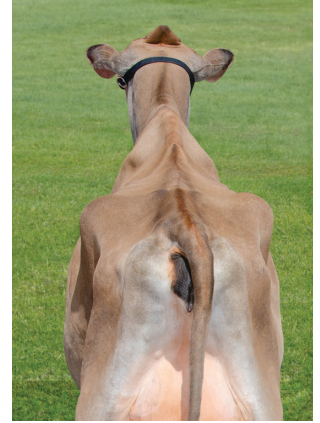


D

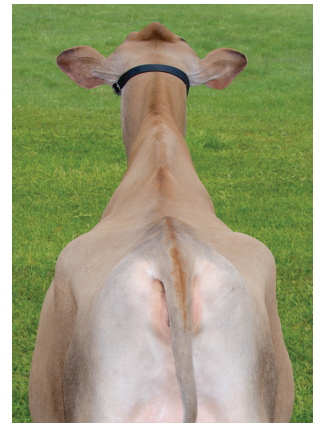


JERSEY CLASS

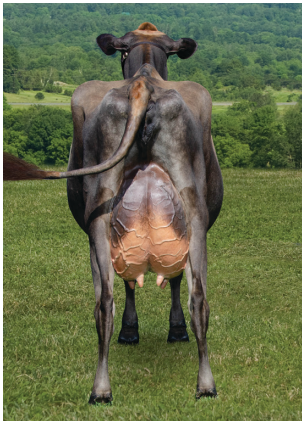
A



B



C



D

